

unit: mm

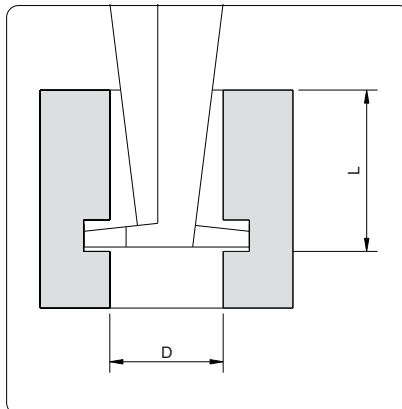
bore sizes to be measured

<p>$h > 2\text{mm}$</p>	<p>$w < 10\text{mm}$</p>	
---------------------------------------	--	--

- ◆ Measure diameter of grooves inside bores
- ◆ Resolution: 0.01mm/0.0005"
- ◆ Automatic power on/off
- ◆ Buttons: on/off, zero, mm/inch
- ◆ Data output(cable code: 100-11 or 100-12)
- ◆ Made of stainless steel

Code	Range	Accuracy
132-012-11	25-300mm	±0.05mm

Application



D	L
Ø25	<50mm
Ø26	<60mm
Ø27~300	<110mm