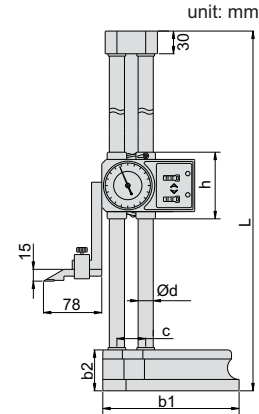


- ◆ Indicator graduation: 0.01mm
- ◆ Carbide tipped scriber
- ◆ Made of stainless steel (except the base)
- ◆ With driving wheel
- ◆ Optional accessory: 267 series clamps

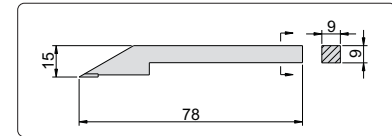
Application with clamps (optional)



185-012-11



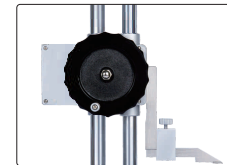
Scriber (included)



Carbide tipped jaws



driving wheel



| Code | Range | Accuracy | b1 | b2 | c | Ød | h | L |
|------------|---------|----------|-----|----|----|----|----|-----|
| 185-012-11 | 0-300mm | ±0.04mm | 135 | 43 | 33 | 15 | 84 | 475 |
| 185-024-11 | 0-600mm | ±0.05mm | 180 | 54 | 38 | 20 | 88 | 810 |