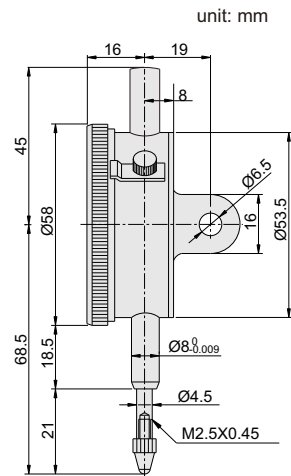




- ◆ Meet DIN878
- ◆ Shockproof
- ◆ Graduation: 0.01mm
- ◆ With limit hands
- ◆ Jeweled bearing
- ◆ Rang per revolution: 1mm
- ◆ With lock screw



226-010-11



Styli (optional)



Application



\* **NEW**

Code	Range	Back	Accuracy	Hysteresis	Scale	Maximum measuring force	Cap	
226-003-11	3mm	lug	12µm	3µm	0-100	1.5N	can lift	
226-005-11	5mm	lug	14µm	3µm	0-100	1.5N	can lift	
226-010-11	10mm	lug	17µm	3µm	0-100	1.5N	can lift	
* <b>NEW</b>	226-003-12	3mm	flat	12µm	3µm	0-100	1.5N	can lift
* <b>NEW</b>	226-005-12	5mm	flat	14µm	3µm	0-100	1.5N	can lift
* <b>NEW</b>	226-010-12	10mm	flat	17µm	3µm	0-100	1.5N	can lift

With manufacturer inspection certificate