



- ◆ Bezel: Ø40mm
- ◆ Graduation: 0.001mm
- ◆ With limit hands
- ◆ Jeweled bearing
- ◆ Supplied with lug and flat back

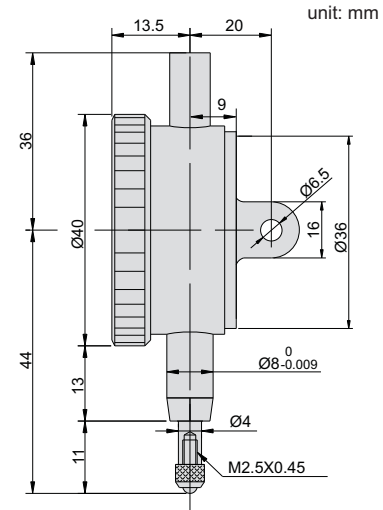
Application



INDICATOR



228-001-01



Contact points (optional)



Series 270

Code	Range	Accuracy	Hysteresis	Range/rev	Scale
228-001-01	1mm	5µm	2µm	0.1mm	0-100