

- ◆ Supplied with limit pointers and bezel clamp

Styli **(optional)**

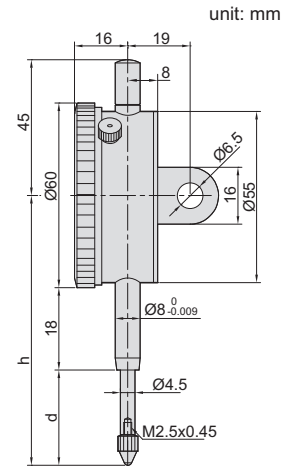


Series 270

Application



**230-030-11**



unit: mm

| Code              | Range | Graduation | Accuracy(fges) | Hysteresis(fu) | Range/rev | Dial reading | Remark   | h    | d    |
|-------------------|-------|------------|----------------|----------------|-----------|--------------|----------|------|------|
| <b>230-010-11</b> | 10mm  | 0.1mm      | 40µm           | 20µm           | 10mm      | 0-10mm       | lug back | 70mm | 20mm |
| <b>230-030-11</b> | 30mm  | 0.1mm      | 60µm           | 20µm           | 10mm      | 0-10mm       | lug back | 90mm | 40mm |