

# SERIES 231

# WATERPROOF DIAL INDICATOR



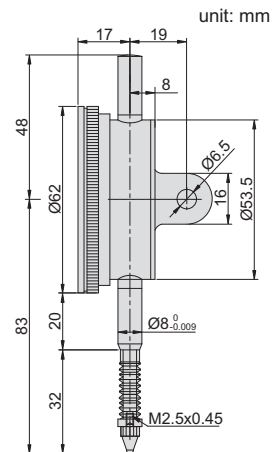
- ◆ Meet DIN878
- ◆ Graduation:0.01mm
- ◆ IP54 dust/waterproof
- ◆ Jeweled bearing

### Styli(optional)



Series 270

### Application



Code	Range	Accuracy	Hysteresis	Range/rev	Dial reading	Remark
231-010-21	10mm	17µm	3µm	1mm	0-100	lug back
231-010-22	10mm	17µm	3µm	1mm	0-100	flat back