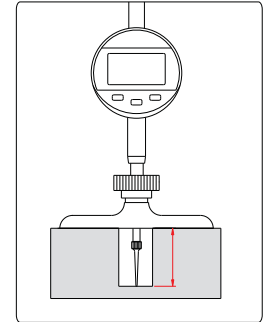
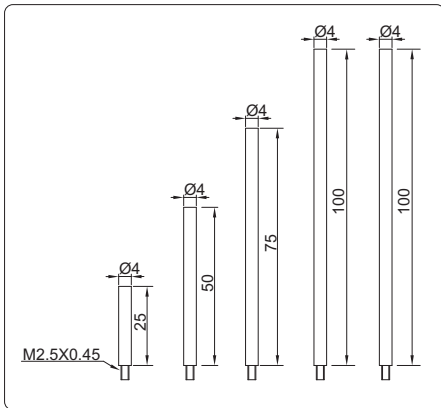




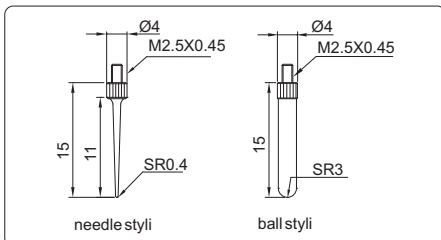
- ◆ Button: tolerance set, data preset, inch/mm conversion, measuring direction set, max./min./range measurement, absolute/incremental measurement
- ◆ Data output(cable code:200-03 or 200-04)
- ◆ Automatic power off
- ◆ Stainless steel base
- ◆ Supplied with pointed tip and ball tip



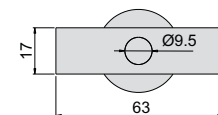
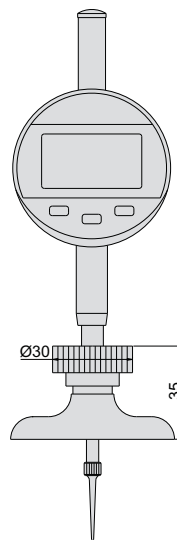
extension rods (included)



styli (included)

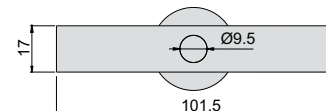
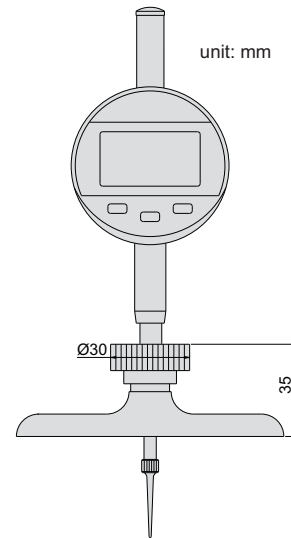


293-300-12



293-300-11 and 293-300-01

unit: mm



293-300-12 and 293-300-02

Resolution 0.001mm/0.00005"

| Code | Range | Accuracy | Digital indicator stroke | Base |
|------------|---------------|----------|--------------------------|------------|
| 293-300-01 | 0-300mm/0-12" | ±5µm | 25.4mm/1" | 63x17mm |
| 293-300-02 | 0-300mm/0-12" | ±5µm | 25.4mm/1" | 101.5x17mm |

Resolution 0.01mm/0.0005"

| Code | Range | Accuracy | Digital indicator stroke | Base |
|------------|---------------|----------|--------------------------|------------|
| 293-300-11 | 0-300mm/0-12" | ±0.03mm | 25.4mm/1" | 63x17mm |
| 293-300-12 | 0-300mm/0-12" | ±0.03mm | 25.4mm/1" | 101.5x17mm |