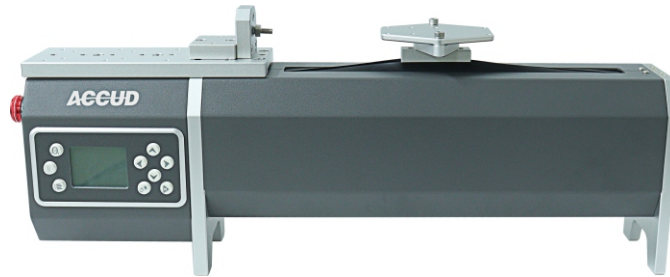


- ◆ Used to measure the force of pull or push with series DF force gauge
- ◆ Programmable, can do automatic testing cycle
- ◆ Can set three working modes: displacement cycle, force cycle, user-defined cycle
- ◆ With alarm: position, force and motor block



FORCE

### SPECIFICATION

Max. capacity	650N
Max. travel	220mm
Moving speed	30-720mm/min(adjustable)
Resolution of speed	1mm/min
Moving speed accuracy	2%
Displacement resolution	0.01mm
Displacement accuracy	±0.3mm
Output	USB, RS232
Working temperature	10-40°C
Power supply	AC100-240V
Dimension	671×120×278 mm
Weight	13kg

### INCLUDED ACCESSORIES

Main unit	1pc
Software and USB cable	1set
Power cable	1pc